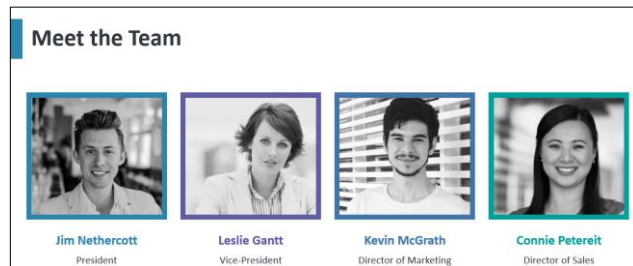


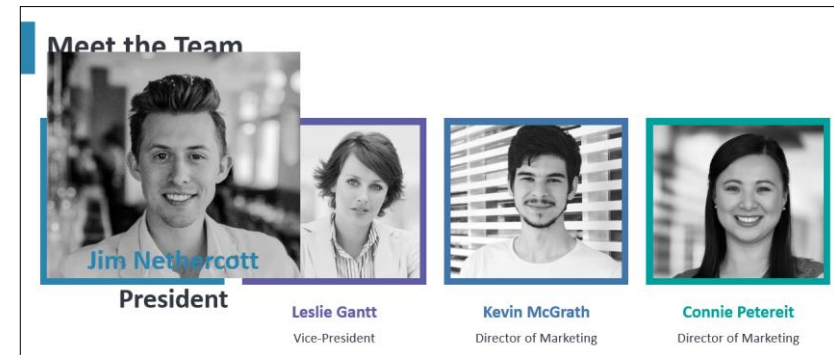
Application: PowerPoint – Morph

Morph, is a new cinematic effect that brings your slides to life and creates smooth, animated transitions by tracking and moving images and other objects across multiple slides in your presentation.

1. Create a new slide and then add any text, pictures or objects that you want. This first slide indicates the placement of objects at the beginning of the transition.



2. **Right-click** the **slide thumbnail** and select **Duplicate Slide**.
3. On the copied slide, **move** and **resize** any of the text, pictures, or objects as needed.
 - For example, you can make an item stand out by cropping a portion of an object, increasing its size, or you can line things up and add descriptions.
 - This second slide indicates the placement of objects at the end of the transition.



4. Repeat Step 2 & 3 to morph additional objects on original slide.
5. To apply the effect, **select all slide thumbnails** to be morphed and from the **Transitions** tab select **Morph**. PowerPoint tracks the objects found on the selected slides and then animates their size and position when the effect is viewed.
6. Run the slideshow to preview the morphed transitions.
7. To customize the effect, select **Transitions > Effect Options**.

